



SREE AYYAPPA PUBLIC SCHOOL

Summer Holiday Assignment: 2022-2023

Class - VIII

ENGLISH

F.M

1. Make a healthy semolina cake of your favourite flavour. Write its ingredients and process to prepare.
2. Collect data of minimum 10 members from your family and friends, who have taken the COVID- vaccination . Represent it using a YES /NO table on chart paper. Also make a colourful poster on “Awareness of COVID vaccination and precautions against it.
3. Create a Superhero- On a chart paper create a Superhero making columns of My Superhero- draw , My Superhero powers, My Superhero is called , My Superhero’s secret identity and what my Superhero does.
4. Read from MCB- I Never Forget a Face , note down ten new words along with the synonyms and antonyms in your English copy.
Write the features and expressions of a face that gets etched in memory- Happy/ Sad/ Suspicious. Narrate any such incident in the form of a paragraph when you confronted such kind of face.
5. Vocabulary exercise- Read any story book or magazine and prepare your dictionary of 50 unfamiliar words with meanings and usages.
6. Compose a poem on NATURE. Also sketch the image using your creativity.
7. Make a chart of five **good and bad habits**. Also write a paragraph on the importance of good habits and why we should avoid bad habits.



SREE AYYAPPA PUBLIC SCHOOL

Summer Holiday Assignment: 2022-2023

Class - VIII

MATHEMATICS

F.M

1. Multiple Choice Questions (MCQ)

1. An integer can be:

- A. Only Positive B. Only Negative C. Both positive and negative D. None of the above

2. A rational number can be represented in the form of:

- A. p/q B. pq C. $p + q$ D. $p - q$

3. The value of $1/2 \times 3/5$ is equal to:

- A. $1/2$ B. $3/10$ C. $3/5$ D. $2/5$

4. The value of $(1/2) \div (3/5)$ is equal to:

- A. $3/10$ B. $3/5$ C. $6/5$ D. $5/6$

5. The value of $1/2 + 1/4$ is equal to:

- A. $3/4$ B. $3/2$ C. $2/3$ D. 1

2. Fill in blanks:

1. The solution of the equation $2x - 1 = 3$ is _____.
2. The solution of $2y = 14$ is _____.
3. A linear equation in one variable has _____ solution.
4. 5 is added to thrice a number x gives 20. The value of x is _____.
5. If 2 is subtracted from a number, it becomes -8. This statement in the form of an equation is _____.

3. True or False Statement

1. The difference of two rational number is a rational number.
2. Addition of rational numbers is associative.
3. Addition of rational numbers is commutative.
4. Subtraction of rational numbers is not commutative.
5. The addition or subtraction of two rational number is a rational number

Answer the following questions:

1. If the product of any two rational numbers is 2 and one of them is $\frac{1}{7}$, find the other?
2. Represent $-\frac{2}{11}$, $-\frac{5}{11}$, and $-\frac{9}{11}$ on the number line.
3. A is twice old as B. Five years ago A was 3 times as old as B. Find their present ages.
4. The digits of a 2-digit number differ by 5. If the digits are interchanged and the resulting number is added to the original number, we get 99. Find the original number.
5. Solve: $5x - 3 = 3x + 7$
6. If the product of any two rational numbers is 2 and one of them is $\frac{1}{7}$, find the other?
7. Give a rational number that is equivalent to $\frac{4}{7}$ with
 - (a) numerator 20
 - (b) denominator 28
8. The angles of a triangle are in the ratio 2 : 3 : 4. Find the angles of the triangle.
9. The breadth of a rectangular garden is $\frac{2}{3}$ of its length. If its perimeter is 40 m, find its dimensions.
10. The sum of a two-digit number and the number obtained by reversing its digits is 121. Find the number if its unit place digit is 5.
11. Complete all the exercises of chapters done in class in April and May.

Project Work:

1. Prepare life history of any five Indian great mathematician and their contribution in the field of mathematics.
2. Do Activity 3 and activity 4 from mathematics lab manual.

श्री अय्यप्पा पब्लिक स्कूल
बोकारो इस्पात नगर

समर एसाइन्मेंट : 2022-23

वर्ग:- अष्ट

विषय :- हिन्दी

01. कोई एक कविता लिखिए जिसमें आपके सपनों का वर्णन हो, जो आप जीवन में करना चाहते हो।
02. एक से दस मई तक के एक-एक बड़ी खबरों को छाँटिए और इसपर अपनी एक-एक प्रतिक्रिया लिखिए।
03. आपके जीवन में स्कूल टीचर्स और किताबों की क्या भूमिका है। स्कूल बंद के दौरान आपने इन सभी के महत्व के बारे में जो समझा है, वर्णन कीजिए।

श्री अय्यप्पा पब्लिक स्कूल
बोकारो इस्पात नगर
ग्रीष्मावकाश गृहकार्य सत्र 2022-23

कक्षा – 8

विषय– संस्कृत

- 1) 5 अव्यय लिखकर उससे वाक्य निर्माण करें।
- 2) 5 सर्वनाम लिखकर उनसे वाक्य निर्माण करें।
- 3) वर्णमाला का चार्ट तैयार करें।
- 4) गम् धातु का रूप लट् और लृट् में लिखें।
- 5) पद् धातु का रूप लङ् लकार में लिखें।
- 6) बालक शब्द का रूप कारक के चिन्हों के साथ संस्कृत और हिन्दी में लिखें।



SREE AYYAPPA PUBLIC SCHOOL

Summer Holiday Assignment: 2022-2023

Class - VIII

SCIENCE

F.M

I .ACTIVITY BASED

1. Collect and paste any five different types of synthetic fibres and plastics in your surrounding in a chart paper. Also mention their harmful effects.
2. Paste the samples of different types of crops based on season.
3. We all are aware of the campaign “Say No To Plastics “. Make a poster depicting same.
4. Collect and paste the samples of any five different types of weeds in a chart paper and categorise them as per their usages- harmful and useful.

II. Answer the following questions in a thin copy

1. Draw a flowchart of different steps involved in agriculture in a colourful chart paper.
2. Explain the Pascal’s law with an activity and write its application related to your daily life.
3. What is meant by the 3R’s principles in the context of use of plastics. ?
4. Give any four differences between manure and fertilizers.
5. Give reasons:
 - a. School bags are provided with wide straps to carry them.
 - b. The walls of a dam are thicker near the bottom than at the top.
6. Calculate the pressure when a force of 200 N is exerted on an area of –
 - a. 10 m^2
 - b. 5 m^2
7. State the function of Food Corporation of India.
8. State two advantages of the process of transplantation in growing crop.
9. Which plastic is used :
 - a. For making uniforms of fire-fighters.
 - b. For making electric switches.
 - c. For making flexible water bottles.
10. A pressure of 10 kPa acts on an area of 0.3 m^2 . Calculate the force acting on the area.

SREE AYYAPPA PUBLIC SCHOOL

BOKARO STEEL CITY

SESSION – 2022 – 2023

SUMMER ASSIGNMENT

SOCIAL SCIENCE

STD – 8

- ❖ PROJECT WORK (INDIVIDUAL)
- ❖ TOPIC – Write the functioning of East India Company

❖ ANSWER THE FOLLOWING QUESTIONS :-

1. Look at the time line in figure 1.1 (From the reference book) .
Pick three dates that are important in political history , three that are important in cultural history and three that are important in religious history .
2. Why are elections important in a democracy ?
3. India is both a democracy and republic . Justify this statement .

NOTE :-

- Project work must be done in A4 size paper in file .
- Question and answers should be done in thin copy .



SREE AYYAPPA PUBLIC SCHOOL

Summer Holiday Assignment: 2022-2023

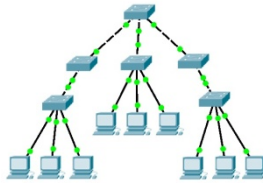
Class - VIII

IT

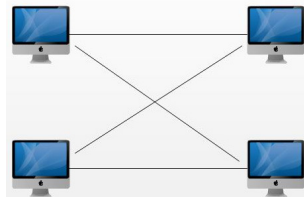
F.M

I. Multiple choice questions:-

1. A group of interconnected computing devices are known as
a. Node b. Network c. Protocol d. Modem
2. Which one of the following is not a component of a network?
a. URL b. Sender c. Receiver d. Message
3. Which network device allows data transmission between two different networks?
a. Hub b. Modem c. Gateway d. Network Interface Card
4. Identify the given topology.



- a. Mess topology b. Tree topology c. Ring topology d. None of these
5. Which kind of network architecture does the following diagram depicts?



- a. Peer to Peer b. Client Server c. both a and b d. None of these
6. Name the organization that keeps track of all IP address of all websites on the internet.
a. ICANM b. ICAIW c. ICANN d. None of these
 7. Which kind of server manages network traffic?
a. Database server b. Web Server c. Dedicated Server d. Network Server
 8. The capability of a transmission medium to transmit maximum amount of data over a network is known its
a. DNS b. Bandwidth c. Transmission media d. Network
 9. Which protocol is responsible for uploading and downloading file from internet?
a. SMTP b. TCP/IP c. HTTP d. FTP
 10. Which type of network cable transmits data in form of light waves?
a. Coaxial b. Optical Fiber c. Twisted pair d. All of these

II. Define the following :-

- a. Intranet b. PAN c. Protocol d. Web portal e. Link

III. Answer the following:-

1. Explain the need for computer network.

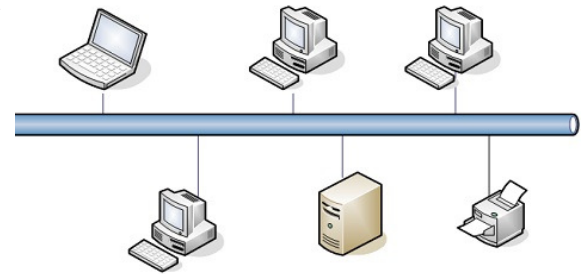
2. Write the difference between Link and Hyperlink.
3. Write two disadvantages of Ring topology.
4. What do you mean by URL?
5. Explain the working of DNS.

IV. Explain the following in your own words:-

a.



b.



V. Application Based Question:-

- a. Rohan wants to share files and documents saved in local storage space from one device to another. Which technology Rohan will use to share files and documents?
- b. Shivani is explaining a topological arrangement of computers in which messages travels in clockwise or in anti clockwise direction to reach its destination node.
Write down the name of the particular topology.

VI. Activity Time

- a. Show the various uses of Networking with the help of picture collage.

Sree Ayyappa Public School
Sector-5/D, B.S.City
Summer Assignment: 2022-23

Std-8

Subject – GK

Direction for question 1 to 4 : Find missing number of the following series question.

1. 4, 16, 36, , 100
(A) 48 (B) 64 (C) 72 (D) 88
2. 1, 8, 27, 64, , 216
(A) 72 (B) 81 (C) 144 (D) 125
3. 3, 15, 35, 63,
(A) 99 (B) 89 (C) 88 (D) 101
4. 2, 8, 18, 32,
(A) 48 (B) 52 (C) 50 (D) 64

Direction for question 5 to 8 : Each question of two words which have certain relationship to each other followed by four pair of related words. Select the pair which has the same relationship.

5. After : Before
(A) First : Second (B) Present : Past
(C) Contemporary : historic (D) Successor : Predecessor
6. Light : Blind
(A) speak : dumb (B) tongue : sound (C) voice : vibration (D) language : deaf
7. Ten : Decimal
(A) Four : Quartet (B) Two : Binary (C) Five : Quince (D) Seven : Septet
8. Pork : Pig
(A) Rooster : Chicken (B) Fish : Beef
(C) Mutton : Sheep (D) Lobster : Beef
9. If in a certain language BEST is coded as DGUV, then DELHI codes as :
(A) E G N J K (B) E F M I J (C) F G N J L (D) None of these
10. If BOMBAY is written as MYMYMY, then 'TAMILNADU' can be written as
(A) ALDALD ALD (B) MNU MNU MNU (C) TLU TLU TLU (D) None of these
11. Choose the word which is different from rest
(A) Cap (B) Turban (C) Hat (D) Veil
12. Choose the word which is different from the rest
(A) Kiwi (B) Eagle (C) Emu (D) Ostrich

Direction for question 13 to 14 : Find missing value in the following questions.

13.

2	8	68
3	11	130
5	?	50

- (A) 4 (B) 5 (C) 8 (D) 10

14. Complete the series 5, 10, 15, ?

- (A) 25 (B) 30 (C) 35 (D) None of these

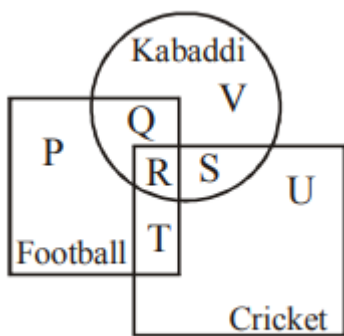
15. A number of friends decided a party and planned to spend Rs. 96 on eatables. Four of them, however did not turn up. As a consequence the remaining had to contribute Rs. 4 each extra. The number of those who attended the party was :

- (A) 12 (B) 8 (C) 16 (D) 20

16. I have a few pens to distribute. If i distribute 2 or 3 or 4 pens to each, then I am left with one pen, but if i distribute 5 each, then I am left with none. What is the minimum number pens i have to distribute?

- (A) 15 (B) 20 (C) 25 (D) 30

* **Direction for question 17 and 18 :** The diagram given below represent those students who play Cricket, Football and Kabaddi. Study the diagram and identify the students who play



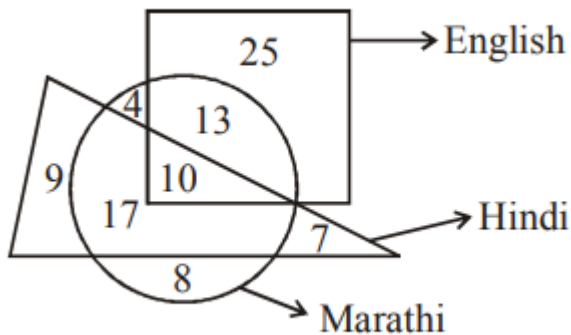
17. All three games

- (A) Q + R (B) R + S (C) R + T (D) R

18. Football and Cricket but not kabaddi

- (A) R + S + T (B) R + T (C) T (D) P + T + U

- * **Direction for question 19 and 20 :** In the following figure square represent the persons who know English, triangle to those know Hindi, circle those know Marathi.



19. How many can speak both English and Hindi only ?
 (A) 41 (B) 13 (C) 10 (D) None
20. How many can speak both Hindi and Marathi only ?
 (A) 27 (B) 17 (C) 25 (D) None of these

- * **Direction for question 21 and 22 :** Let P, Q, R, S, T, U, V and W are sitting round the circle and facing the centre in following ways

- I. P is second to the right to T who is neighbour of R and V
 II. S is not the neighbour of P
 III. V is the neighbour of P
 IV. Q is not between S and W, also W is not between U and S

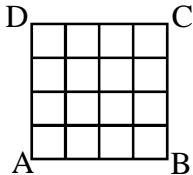
21. Which of the following are not neighbours ?
 (A) RV (B) UV (C) RP (D) QW
22. Which one is immediate right to S ?
 (A) Q (B) U (C) W (D) P

- * **Direction for question 23 and 24 :** Five girls are sitting on a bench to be photographed. Tani is to left of Sania and right to Pihoo, Chuni is to the right to Sana. Varsha is between Sana and Chuni.

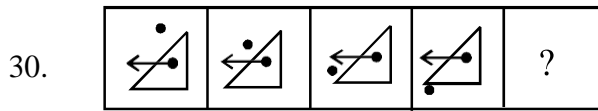
23. Who is in the middle of photograph ?
 (A) Pihoo (B) Sana (C) Varsha (D) Tani
24. Who is the second from the left in photograph ?
 (A) Pihoo (B) Chuni (C) Varsha (D) Tani

25. In a row of boys, if A who is 10th from the left and B who is 9th from the right interchange their positions. If A becomes 15th from the left, then how many boys are there in the row ?
 (A) 24 (B) 23 (C) 27 (D) 28

26. EARN is related to RANE and BON is related to NODB in the same way as TEAR is related to
 (A) AERT (B) ATRE (C) ARET (D) REAT
27. Identify next number in the sequence 15, 29, 56, 108, 208, ?
 (A) 404 (B) 400 (C) 416 (D) 410
28. A,B,C,D,E are sitting around a circle. If D is an right of A, B is second to the left of C, then who is second to the right of D?
 (A) B (B) C (C) E (D) A
29. Identify number of squares in the given figure



- (A) 16 (B) 9 (C) 25 (D) 30



- (A)
- (B)
- (C)
- (D)



SREE AYYAPPA PUBLIC SCHOOL

Summer Holiday Assignment: 2022-2023

Class - VIII

ART

F.M

1. Line Drawing with 4B and 6B Pencils

Topic – Lips, eyes, Nose and women face

2. Newspaper painting.

Topic - (Flower pot or Bird)

(Paste the newspaper on the white drawing sheet and draw a painting on it.)

3. Monochromatic Water colour painting.

Topic – Landscape and flower

(You can create a landscape painting using either color, e.g. black or brown)



SREE AYYAPPA PUBLIC SCHOOL

Summer Holiday Assignment: 2022-2023

Class - VIII

DANCE

F.M

1. Different types of poses for different gods that we can use in dance.
 - i) Lord Ganesh
 - ii) Lord Shiva
 - iii) Lord Vishnu/Krishna
2. 10 Samyutha hasta mudras.
3. Teen taal footwork with hastak.
4. Neck movements (Greeva bheda)



SREE AYYAPPA PUBLIC SCHOOL

Summer Holiday Assignment: 2022-2023

Class - VIII

MUSIC

F.M

1. Make a project on western musical instrument with their names on the chart paper
2. Learn any regional song
3. Learn the definition of Music and Alankar
4. Learn the pattern of Indian music
5. Learn the life history of Amir Khusro



SREE AYYAPPA PUBLIC SCHOOL

Summer Holiday Assignment: 2022-2023

Class - VIII

PHYSICAL EDUCATION

F.M

1. Write the terminologies, fundamental skills, rules and diagram with measurements (in meters) of the following games (any one).

- a) Kho Kho
- b) Basketball
- c) football
- d) Cricket
- e) Volleyball
- f) Kabaddi

2. Write the steps of yoga asana and draw diagram or paste the picture.

- a) Sun Salutation
- b) Warrior Pose

Write three advantages and disadvantages of the above.
